

Planting Date

- Survival
- Environment
 - Weather & Climate
- December Dip
- Length of Storage

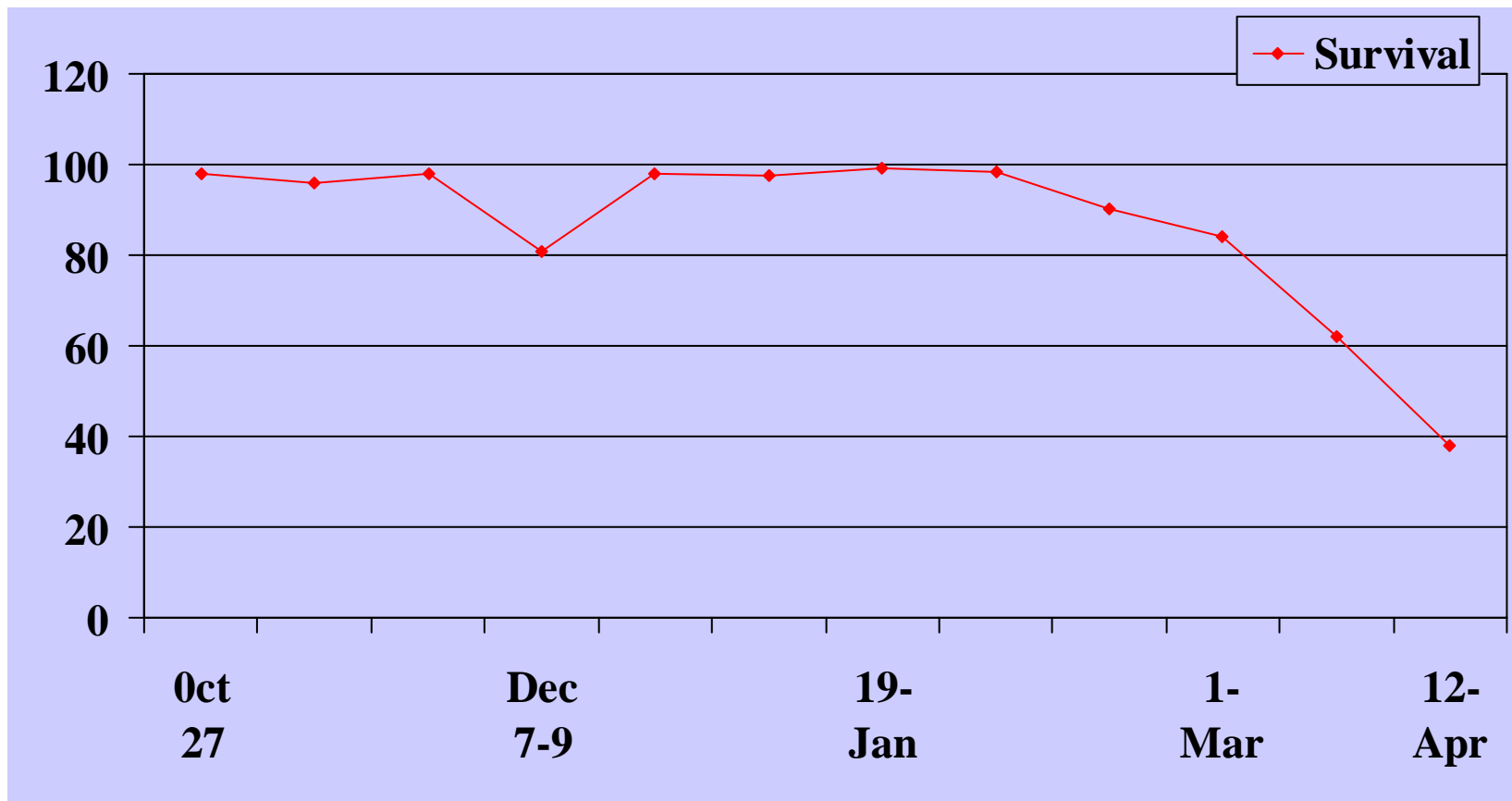
Where science can help

- Availability of
- Seedlings
- Planters
- Transportation
- Environment
 - Weather & Climate

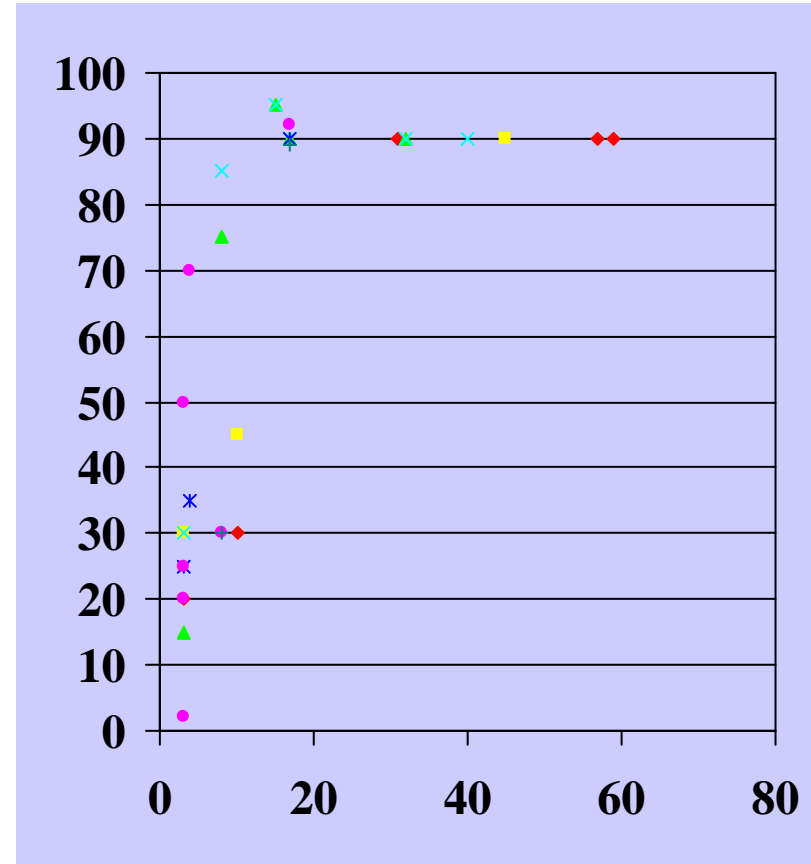
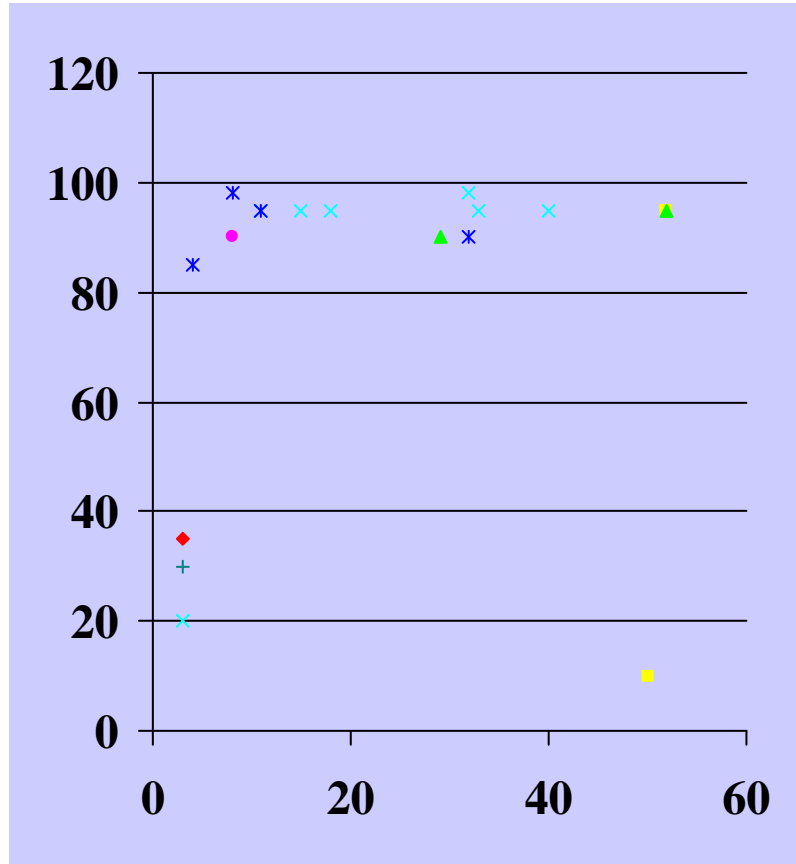
Where science can't help

Effect of Planting Date on Survival

Wakeley 1954



Survival by Lift and Planting Method in South Alabama 1998



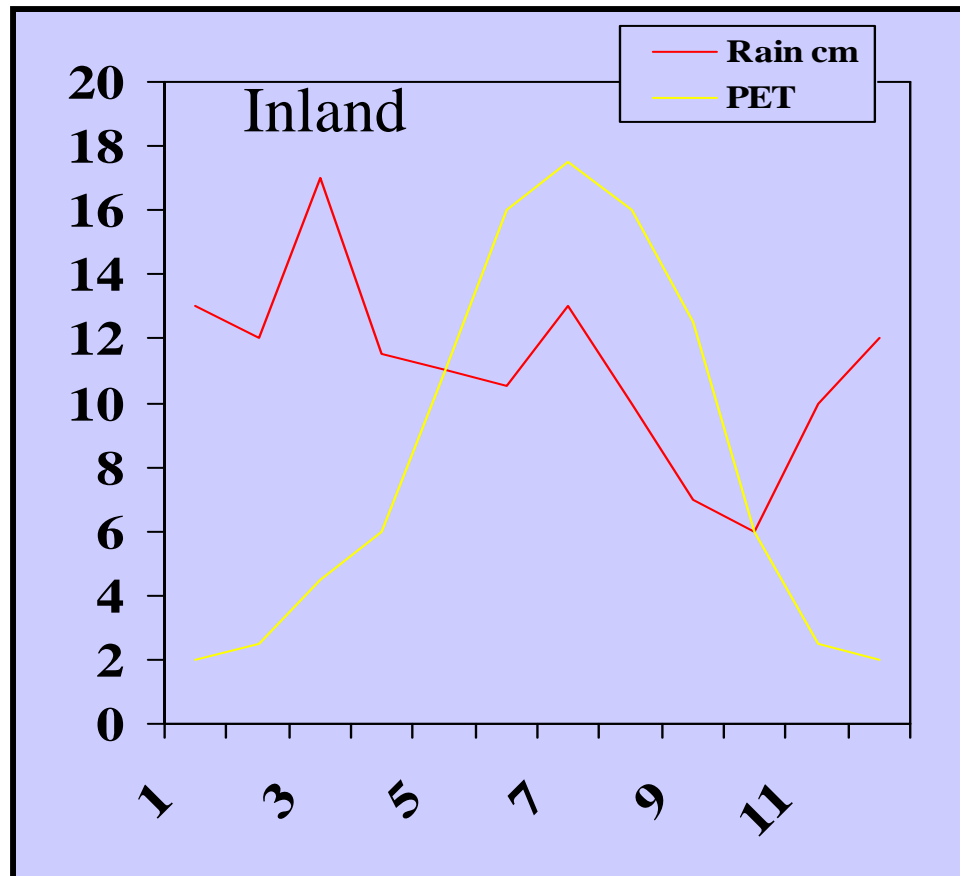
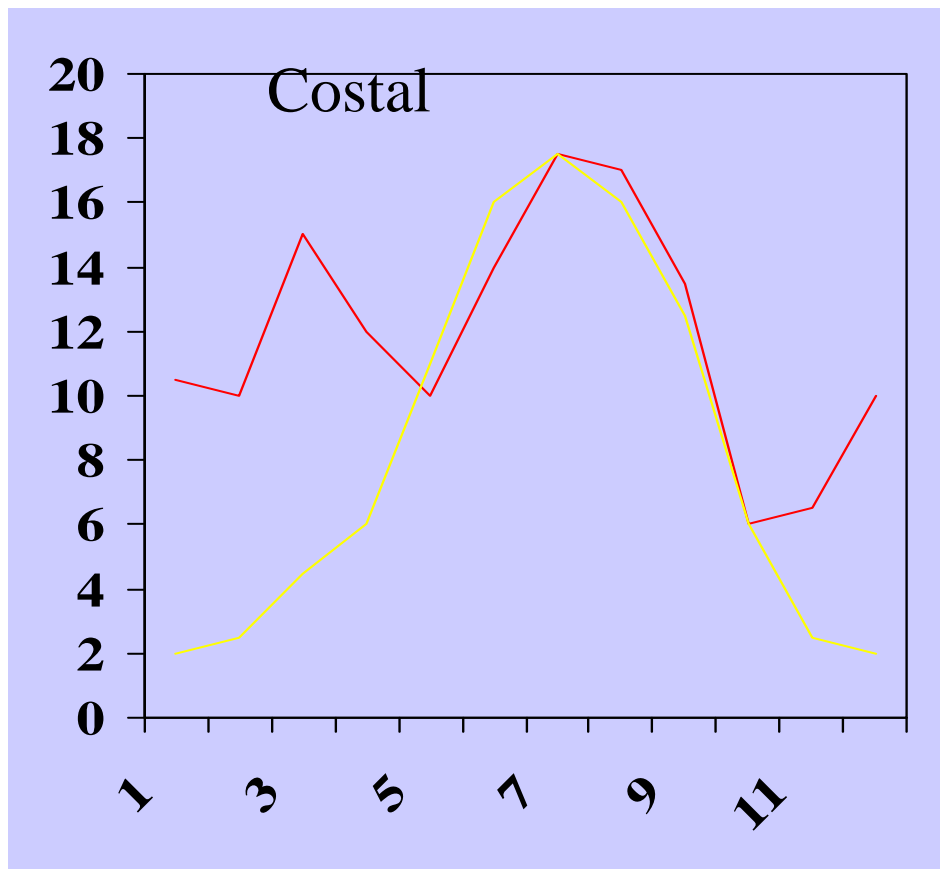
Machine Planting

Hand Planting

Date 3 = Dec 3 & Date 32 = Jan 1

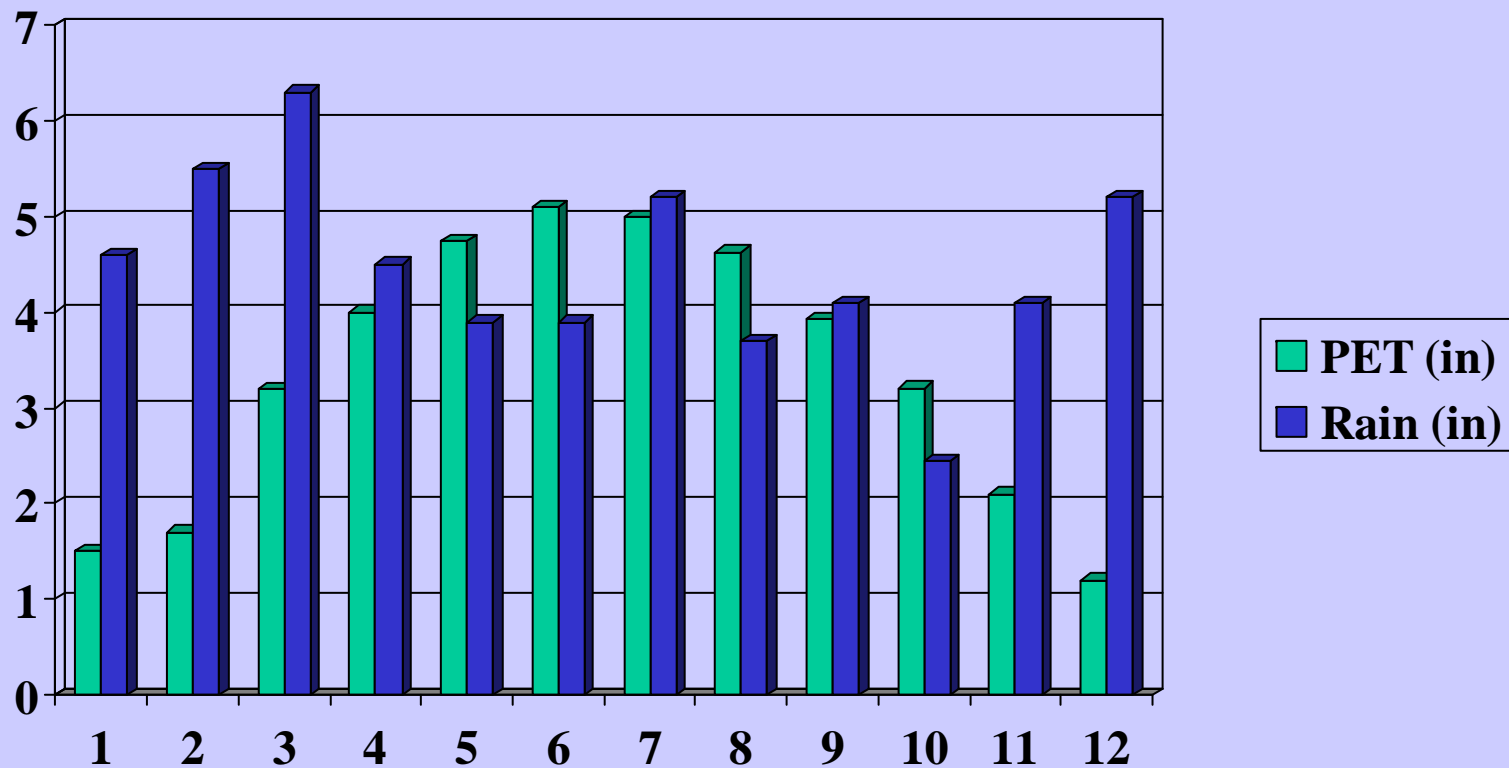
Mean precipitation and PET

For Loblolly Pine Range

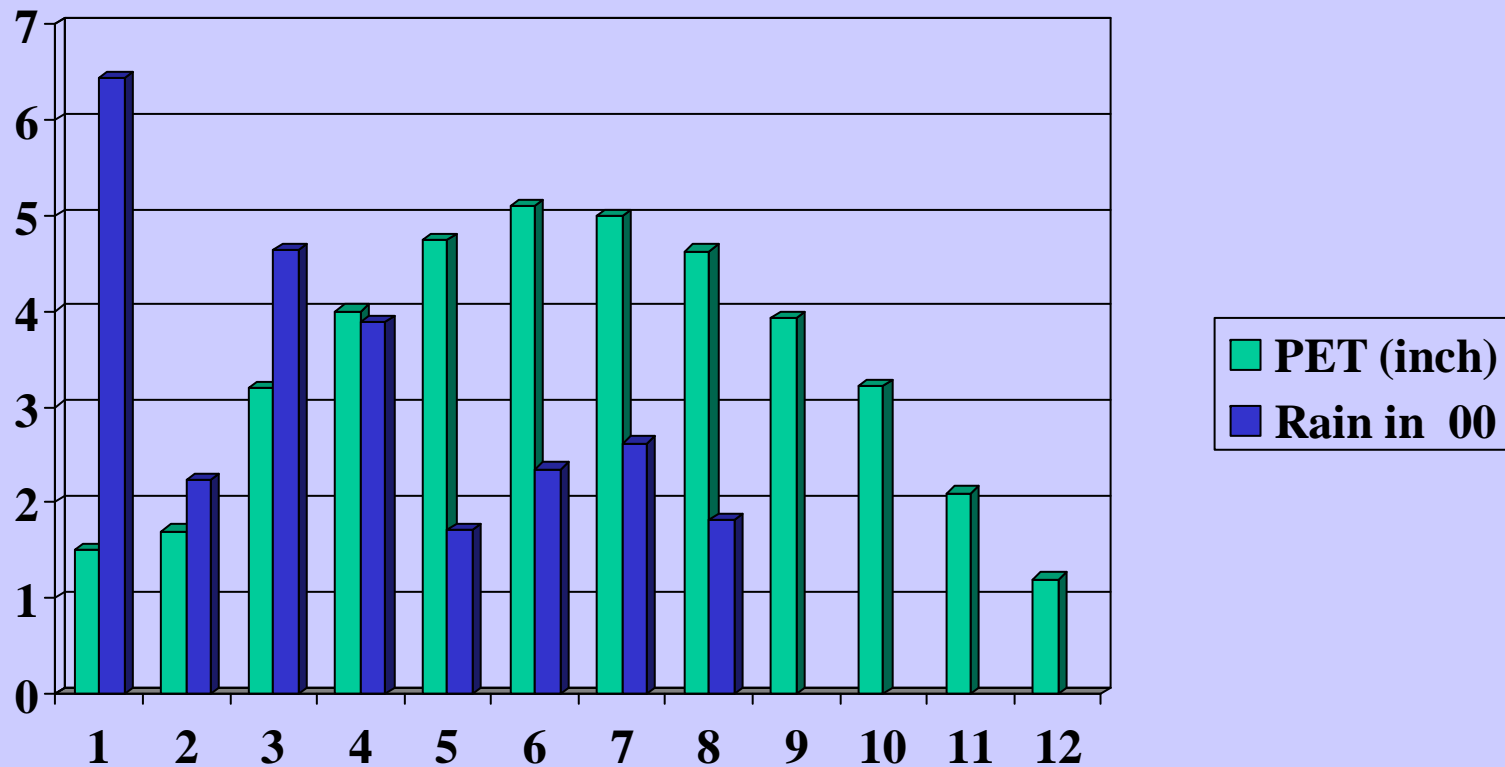


Adapted from Switzer et al 1978

Average PET and Rainfall in Central Ala.



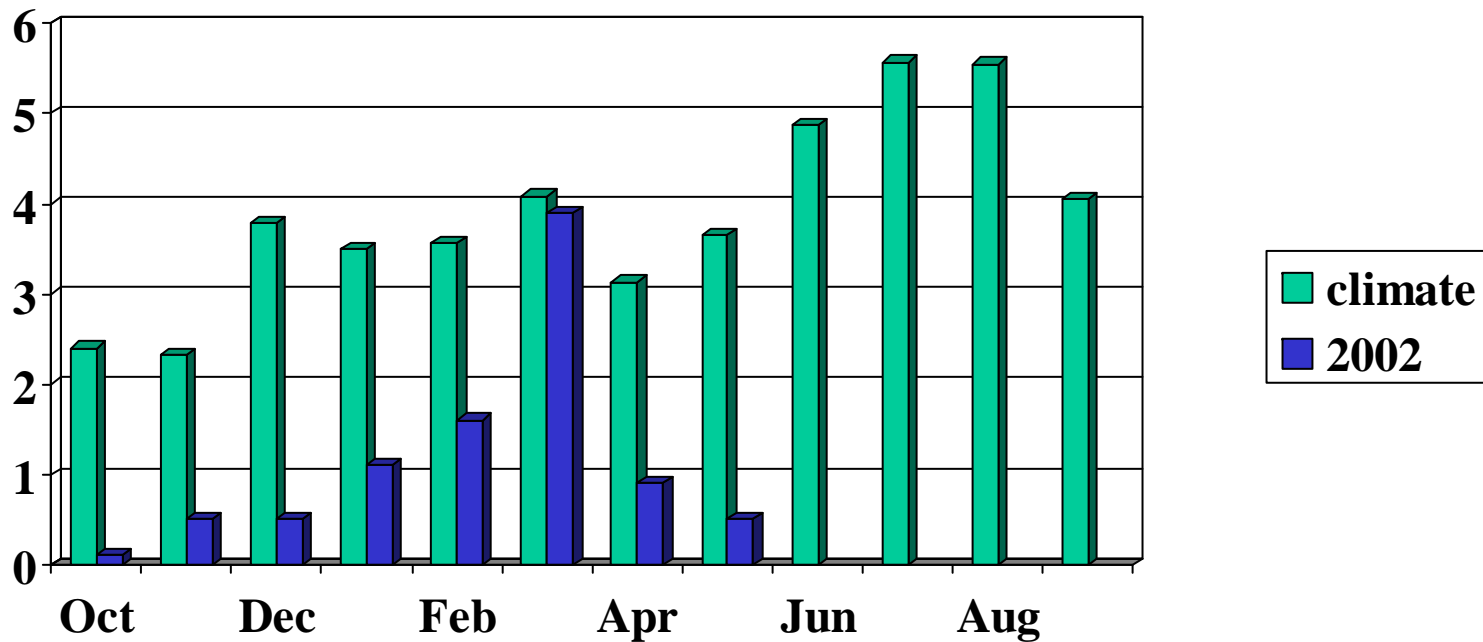
Average PET in Lee Co. Ala. And Rain in Year 2000



Statesboro, Ga

the drought of 01/02

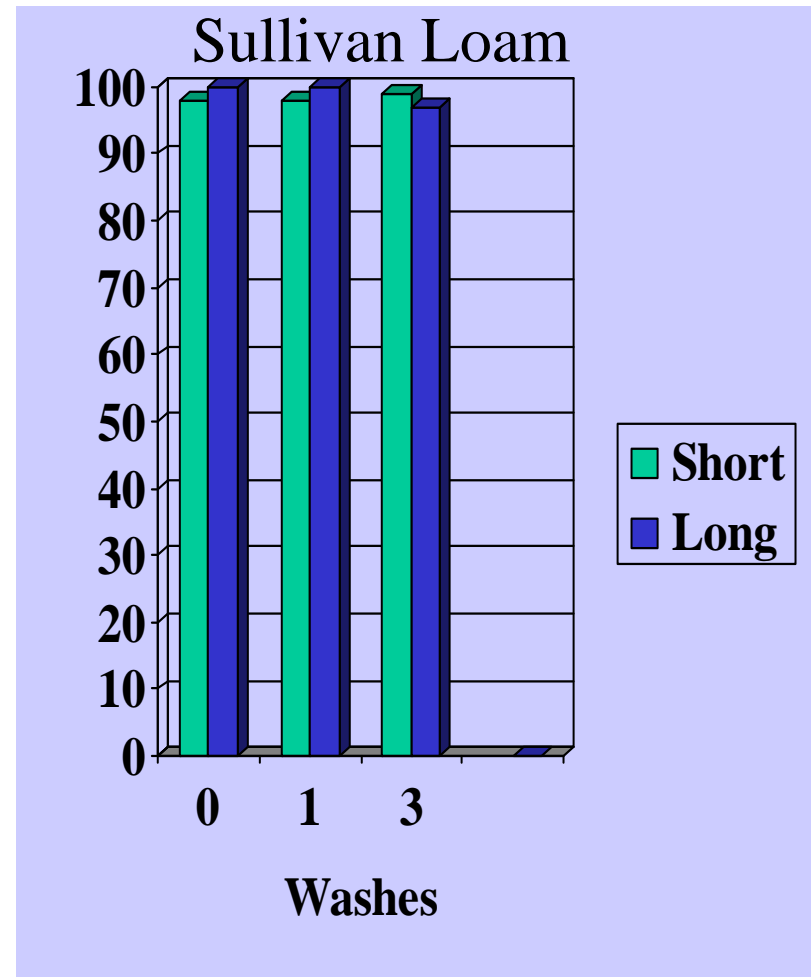
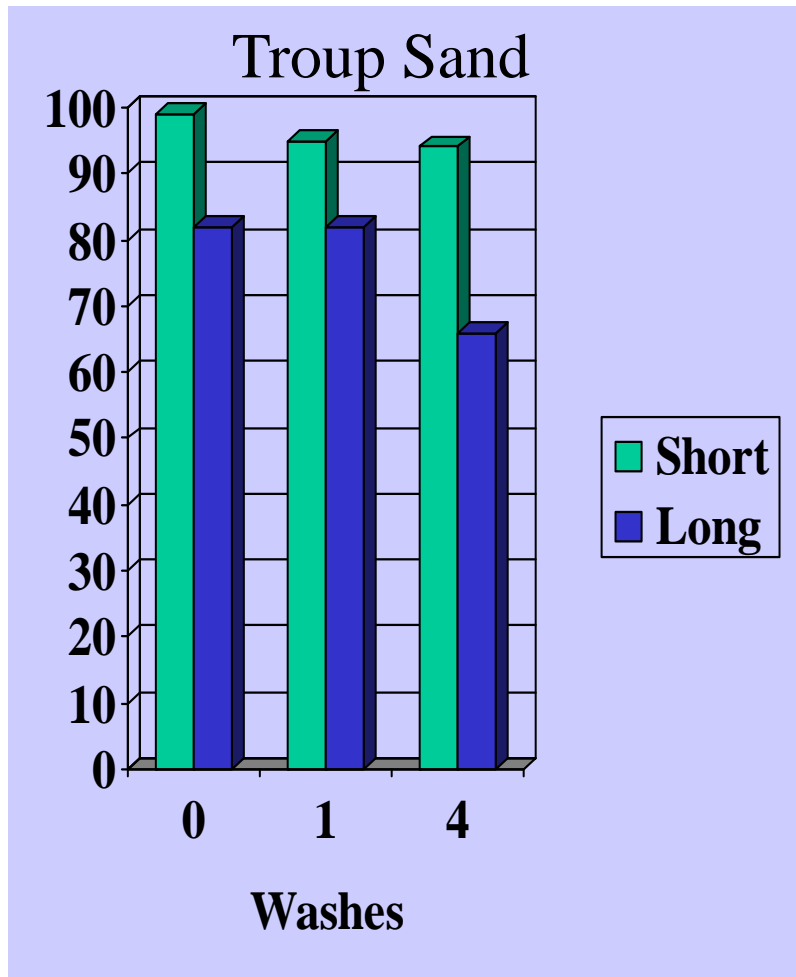
Inches of Rain



Soil Type affects Survival

• Soil Type	Days till Death
• Ruston sandy clay	42
• Swift Sandy Loam	38
• Eustis A Loamy Sand	35
• Troup Loamy Sand	32

Survival By Root Wash / Storage / Soil Type



Dark Roots from saturated soil conditions



Seedling
planted
from
saturated
soil



Seedling planted with blackened roots



Root-Pruning in the Field



Pales Weevil Feeding



Freeze Damage (at nursery)

